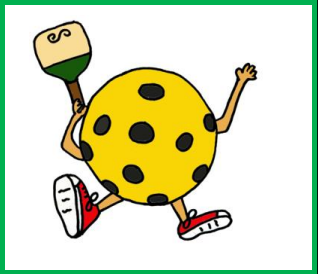


# Mesa Regal Pickleball Club

## WEEKLY NEWS

### March 21, 2021



**WEBSITE:** [www.mrpickleballclub.com](http://www.mrpickleballclub.com)

**FACEBOOK:** [facebook.com/groups/696462040860449](https://facebook.com/groups/696462040860449)

(Mesa Regal Pickleball Friends and Players).

**SUGGESTIONS/COMMENTS:** Email - [suggestion@mrpickleballclub.com](mailto:suggestion@mrpickleballclub.com)

**HOLD MY COURT:** access through website - [www.mrpickleballclub.com](http://www.mrpickleballclub.com)

Newsletter Editor: Nancy Stern [newsletter@mrpickleballclub.com](mailto:newsletter@mrpickleballclub.com)

**Thank you for wearing your mask at the courts when you are not playing and for using the supplied hand sanitizer.**

**EVERYONE** needs to sign up for the 2020-21 season. As of today, **298** MRPBClub members!!

Mesa Regal Pickleball Court Schedule 2020-2021								
Time	Monday	Tuesday	Wednesday	Thursday		Friday	Saturday	Sunday
7:30	Open Play	Open Play	Open Play	Open Play		Open Play	Open Play	Open Play
8:00	Open Play	Open Play	Open Play	Open Play		Open Play	Open Play	Open Play
8:30	Open Play	Open Play	Open Play	Open Play		Open Play	Open Play	Open Play
9:00	Open Play	Open Play	Ladders Group 1	Open Play		Open Play	Open Play	Open Play
9:30	Open Play	Open Play	All Courts	Open Play		Open Play	Open Play	Open Play
10:00	Open Play	Open Play	9:00 - 10:30am	Open Play		Open Play	Open Play	Open Play
10:30		Ladies Social	(Marilyn Kehl)	Ladies Social		4.0 mixed	Shoot out	
11:00		All Courts	Ladders Group 2	All Courts		Courts 5-7	All Courts	
11:30		10:30 - 12:30	All Courts	10:30 - 12:30		10:30 - 12:30	10:00 - 1:00	
12:00		(Shirley Seely)	(Marilyn Kehl)	(Shirley Seely)		(Dale Hartman)	(Craig Carlton)	
12:30	3.5 mixed Courts 3-7	Ladies 3.5	Ladies 3.5	Challenge Court, 3.5+	Men's 4.0	3.5+ Round Robin		Shoot out
1:00	12:00 - 2:00	Courts 4-7	Courts 4-7	Courts 1-2	12:30 - 3:00	Courts 2 - 7	4.5	
1:30	(Larry Cloud)	12:30 - 2:30	12:30 - 2:30	12:30 - 2:30	Courts 3-7	12:30 - 2:30	Tournament Players	All Courts
2:00	Lorne's Men's League	(Connie C/Judy K)	(Connie C/Judy K)	(Colleen Janus)	(Dale Hartman)	(Larry Cloud)	Courts 4-7 1:00 - 3:00	12:30 - 2:30
2:30	Courts 3-7						(Lionel Fauchoux)	(Ric Gonzalez)
3:00	2:00 - 4:00					2.5 - 3.0 Round Robin		
3:30	(Lionel Fauchoux/Dale Hartman)	3.75+ mixed				Courts 2-7		
4:00	Ladies 3.5	Courts 3-7				3:00 - 5:00		
4:30	Courts 3-7	3:30 - 5:30				(Clarence Lindblom)		
5:00	4:00 - 6:00							
5:30	(Barb Benedetti)	(Ken Smith)						
6:00	Beginner Social	2.5-3.0 Round Robin	Beginner Social					
6:30	All Courts	All Courts	All Courts					
7:00	6:00 - 8:00	6:00 - 8:00	6:00 - 8:00					
7:30	(Cindy & Gary St John)	(JoAnn Miller)	(Cindy & Gary St. John)					
8:00								

### SEASON WINDING UP....

As our 2020-21 season finishes, some of our scheduled programs are finishing up and may not be reflected on the schedule. Here are some of the closing dates (check with coordinator):

**FINISHED:** Monday - Beginner Lessons - 10:30-12:30

Thursday - Couples Play - 5:00-7:00

Friday - 2.5-3.0 Skill Level Training - 9:00-11:00

Sunday - 3.5 Training - 10:00-12:00

**PROPOSED ENDING DATES:** Monday, **April 30** - Ladies 3.5+ - 4:00-6:00

Monday and Wednesday, **April 30** - Social Play - 6:00-8:00

Tuesday & Wednesday, **April 14** - Ladies 3.5+ - 12:30-2:30

Wednesday, **May 1** - Ladders - 9:00-12:00

Thursday, **April 15** - Challenge Courts 3.5+ - 12:30-2:30

Friday, **March 26** - Sunday Shootout - 12:30-2:30

Thanks to all our coordinators  
for making this strange season  
at Mesa Regal work for our  
members and having some fun  
at the same time!  
**YOU ALL ROCK!!**



### **VOLUNTEERS MAKE MRPClub A GREAT PLACE TO BE**

This week we are featuring a few more of our club volunteers who we have not previously mentioned. These fine volunteers coordinate activities on our court schedule and/or around our club. Let's meet some of your MRPClub volunteers - Dale Hartman, Lionel Fauchoux and Nancy Stern

**Dale Hartman** - Dale is a seasoned MRPClub member and one of those people who is always there to volunteer his time. Dale is one of our club's longest Mesa Regal residents, staying here for the last 15 years!! He started playing pickleball here at MR about 8 years ago, in the days of wooden paddles! Dale summers in Santa Rosa California where he frequents the 6 courts at the Finley Center and 4 courts at Howarth Park. He also spends some time in Santa Cruz during the summer months where there is a very active group of players that are always a challenge to play with. Also, when traveling is allowed, you can find Dale playing pickleball in Kona, Hawaii!!

Dale is always willing to pitch in to help around our club. Not only will you see him down cleaning courts, reffing at our annual tournament, helping with training, but coordinating scheduled events as well. Currently, Dale coordinates Lorne's Men's League on Mondays with Lionel, the Men's 4.0+ play on Thursdays and 4.0+ mixed play on Friday.

*Editor's note: WOW, thanks for volunteering so much of your time, Dale.*

**What are the one or two things you enjoy about the MRPC?**

I enjoy seeing old friends and meeting new friends every season.

**What is the best/worst thing to happen since you started volunteering?**

I enjoy Lorne's play on Mondays where we have partners that challenge each other working up to the winning court #7. It makes me smile to see the players' accomplishments of winning. The worst thing for me is missing my friends that could not be here because of the pandemic.

**What do you wish other people knew about MRPC and volunteering?**

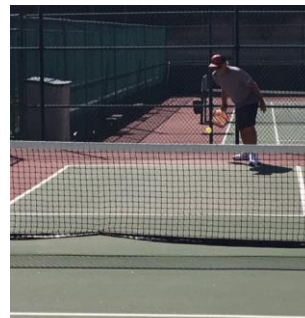
It is important for all players to know that there are many organized skill level play times available for all levels.

**THANKS, DALE**, for your service to the club, we are glad you 'landed' at Mesa Regal !!



**Dale Hartman...**

What an amazing volunteer you are Dale. Not only do you love the game but are giving back too!



**Lionel Fauchoux** - Lionel landed at Mesa Regal 7 years ago and has been playing pickleball for 6 years. A Canadian, Lionel hails from the Prairies.....Saskatoon, Saskatchewan. When he is home, Lionel usually gets out about 4 times a week onto the pickleball courts for some good play.

Lionel is one of those club members who is always there to volunteer. Not only does he help convert the two tennis courts to pickleball courts for our tourney, he steps up to ref as well. Along with helping to clean courts after the rainstorms, he currently coordinates Lorne's Mens Play on Mondays with Dale, 4.5 Competitive play Saturdays and 3.5 Training with Clarence on Sundays. We are also thrilled to report that Lionel has agreed to be Chairperson of MRPC Training for the 2021-22 season. **THANK YOU, LIONEL!!**

**What was your first impression of the MR pickleball courts?**

I was quite thrilled of the 7 courts at MR. However, just playing in my first year realized that 7 courts was not nearly enough for all the players we have here.

**What are the one or two things you enjoy about the MRPC?**

I love playing here as I know so many of the people and 99.9% of them are fun to play and socialize with.

**What is the best/worst thing to happen since you started volunteering?**

I really enjoy training at any level and everybody shows so much appreciation. The worst thing is definitely watching the somber faces of the club members after a rain storm and seeing the courts under 3 feet of water and mud! The best thing is the appreciation shown by trainees and their gifts of Shock Top waiting on my stairs the next day 😊! MMmmm!

**What do you wish other people knew about MRPC and volunteering?**

I wish people knew how gratifying it is to volunteer. Thanks to all of the volunteers, it is what really makes or breaks a club.

**THANKS, LIONEL**, for your service to the club, we are glad you 'landed' at MRegal !!



**Lionel Fauchoux...**

Sir Lionel is always having a good time on and off our courts and willing to play with anyone at any time!



**Nancy Stern** - Nancy first found pickleball at Mesa Regal while biking the Resort and noticing Neil & Lorie Ranson, Barb Benedetti and Louise McDonald on the courts. She was invited to join the group and that was the first lesson for her in pickleball. Three years later she returned for a short week stay at MR that turned out to be two weeks so she could represent Mesa Regal in the first Cal Am Resort tournament. The gals and guys partnered up for their first tourney experience ever and had a ton of fun. Although they may not have won much, Mesa Regal came away from that tournament known as the best partying Resort!!! That was about 12 years ago and Sterns have called Mesa Regal their winter home the past 8 seasons. Nancy has missed the action at Mesa Regal due to the Covid year but has been busy on beautiful Vancouver Island in Nanaimo, B.C. Canada, playing singles pickleball, mountain biking, kayaking and disc golfing!

Nancy has been an active volunteer in the club over the last 8 years in various roles. Three years as Secretary of the club, 2 years as Training Chairperson and subsequent training helper, Tournament Chairperson since 2016, 3 years helping Maurice complete Skill Level Ratings, Newsletter Editor since its beginning (2014) and wherever else she could help out.

**What was your first impression of the MR pickleball courts?**

There were 5 courts 12 years ago when we had our short stay and I was so impressed there were more than 2!

**What are the one or two things you enjoy about the MRPC?**

I love the fact that our pickleball club has evolved and grown over the years and the club has worked very hard to accommodate all members with training and skill level play opportunities. I also love the 'down south' family we have acquired through pickleball and all the new people we meet each season.

**What is the best/worst thing to happen since you started volunteering?**

The best thing about volunteering is getting to know more of the club members and seeing how appreciative they are when you are willing to help them. The worst thing would be having to encourage people to volunteer as we know that many hands make light work and just a few volunteers for the size of our club equals BURN OUT.

**What do you wish other people knew about MRPC and volunteering?**

It is a way that you can become involved with the club not only to meet new people but help the MRPC Executive continue to make decisions that help keep all the wonderful programs that are in place here for the members.

**THANKS, NANCY**, for your service to the club, we are glad you 'landed' at Mesa Regal !!



Lorie, Barb, Nancy & Louise - 1<sup>st</sup> tourney protective eyewear..lol!

**Nancy Stern...**  
Whether she is on the courts competing, socializing or volunteering, Nancy loves to have FUN!



## PADDLES FOR SALE

One of our members have some 'Canucks' paddles for sale.....

### **For Sale - New, Unused**

2 Graphite "Canuck" Pickleball Paddles  
Aluminum Core

(Discontinued Stock originally priced at  
110.00 + tax + shipping)

Selling for \$85.00 each or both for \$150.00

**See Karl - site 1553 - ksmacey@gmail.com**

**480-478-9879**



## UPCOMING TOURNAMENTS

**PRESCOTT SPRING FLING** - (sanctioned) April 8-11

DID YOU KNOW that you can keep up to date on tournaments in our area by going to: [www.pickleballtournaments.com](http://www.pickleballtournaments.com) AND you can follow participant wins & losses by looking up a specific event for the tournament when people are playing. It is a fun way to watch our pickleball friends' progress throughout their tournament experience.

REMEMBER, if you play in a tournament and have a result you would like to share with the club....email [newsletter@mrpickleballclub.com](mailto:newsletter@mrpickleballclub.com) and I will add that to our newsletter!

**That's all for this week folks....keep safe, keep positive,  
keep smiling, and happy playing!!!!**

