



# Mesa Regal Pickleball Club

## WEEKLY NEWS

### February 28, 2021



**WEBSITE:** [www.mrpickleballclub.com](http://www.mrpickleballclub.com)

**FACEBOOK:** [facebook.com/groups/696462040860449](https://facebook.com/groups/696462040860449)

(Mesa Regal Pickleball Friends and Players).

**SUGGESTIONS/COMMENTS:** Email - [suggestion@mrpickleballclub.com](mailto:suggestion@mrpickleballclub.com)

**HOLD MY COURT:** access through website - [www.mrpickleballclub.com](http://www.mrpickleballclub.com)

Newsletter Editor: Nancy Stern [newsletter@mrpickleballclub.com](mailto:newsletter@mrpickleballclub.com)

**Thank you for wearing your mask at the courts when you are not playing and for using the supplied hand sanitizer.**

**PLEASE MAKE SURE YOU SIGN UP ON THE ONLINE MEMBERSHIP FORM.**

**EVERYONE** needs to sign up for the 2020-21 season. As of today, **286**MRPBClub members!!

Mesa Regal Pickleball Court Schedule 2020-2021							
Time	Monday	Tuesday	Wednesday	Thursday	Friday	Saturday	Sunday
7:30	Open Play	Open Play	Open Play	Open Play	Open Play	Open Play	Open Play
8:00	Open Play	Open Play	Open Play	Open Play	Open Play	Open Play	Open Play
8:30	Open Play	Open Play	Open Play	Open Play	Open Play	Open Play	Open Play
9:00	Open Play	Open Play	Ladders Group 1	Open Play	2.5-3.0 Training	Open Play	Open Play
9:30	Open Play	Open Play	All Courts	Open Play	Courts 1-2, 9-11am	Open Play	Open Play
10:00	Open Play	Open Play	9:00 - 10:30am	Open Play	(Mike Pecot)	Shoot out	3.5 Training
10:30	Beginner 1 Lessons	Ladies Social	(Marilyn Kehl)	Ladies Social	4.0 mixed		Courts 4-7
11:00	Courts 1 - 2	All Courts	Ladders Group 2	All Courts	Courts 5-7	All Courts	10:00 - 12:00
11:30	10:30 - 12:30	10:30 - 12:30	All Courts 10:30 - 12:00	10:30 - 12:30	10:30 - 12:30	10:00 - 1:00	(Clarence Lindblom & Lionel Fauchoux)
12:00	(Craig Carlton)	(Shirley Seely)	(Marilyn Kehl)	(Shirley Seely)	(Dale Hartman)	(Craig Carlton)	
12:30	3.5 mixed Courts 3-7	Ladies 3.5	Ladies 3.5	Challenge Court, 3.5+	Men's 4.0	3.5+ Round Robin	Shoot out
1:00	12:00 - 2:00pm	Courts 4-7	Courts 4-7	Courts 1-2	12:30 - 3:00	Courts 2 - 7	
1:30	(Larry Cloud)	12:30 - 2:30	12:30 - 2:30	12:30 - 2:30	Courts 3-7	12:30 - 2:30	All Courts
2:00	Lorne's Men's League	(Connie C/Judy K)	(Connie C/Judy K)	(Colleen Janus)	(Dale Hartman)	(Larry Cloud)	
2:30	Courts 3-7						
3:00	2:00 - 4:00					2.5 - 3.0 Round Robin	
3:30	(Lionel Fauchoux/Dale Hartman)	3.75+ mixed				Courts 2-7	
4:00	Ladies 3.5	Courts 3-7				3:00 - 5:00	
4:30	Courts 3-7	3:30 - 5:30				(Clarence Lindblom)	
5:00	4:00 - 6:00						
5:30	(Barb Benedetti)	(Ken Smith)			Mary Alei / Donnie Torres		
6:00	Social Play	2.5-3.0 Round Robin	Social Play				
6:30	All Courts	All Courts	All Courts				
7:00	6:00 - 8:00	6:00 - 8:00	6:00 - 8:00				
7:30	(Cindy & Gary St John)	(JoAnn Miller)	(Cindy & Gary St. John)				
8:00							

### SCHEDULED PLAY-RATINGS-MEMBERSHIP

Remember, other than open play, you must be a member of our club to participate in our scheduled programs. Do you need a rating??? **YES**....To join any skill-level MRPC activity, you need to have either a USAPA or MRPC rating and a **MEMBERSHIP**. If you need a MRPC rating, please contact Clarence, Ratings Chair, at [president@mrpickleballclub.com](mailto:president@mrpickleballclub.com).

## **VOLUNTEERS MAKE MRPClub A GREAT PLACE TO BE**

Having volunteers organize a Club with more than 600 members (in normal times) is no small feat. While we have a group of 5 people on our Executive, it takes many more volunteers to meet the needs of the membership. This season has had additional challenges with Covid restrictions, new guidelines and a lot of past volunteers who did not make it down this year. We do thank all our volunteers for the extra effort they have endured. Let's meet some of your MRPClub volunteers from your court schedule - Colleen Janus, Larry Cloud, Craig Carlton and Cindy & Gary St. John.

**Colleen Janus** - Hailing from Wausau & Kenosha, Wisconsin, Colleen has been a winter resident of Mesa Regal for 5 years. In her first year here, she found out that volunteer Pat Porter gave beginner lessons so quickly joined the club and learned how to play pickleball. After a season of playing at Beginners Social and Open play, Colleen got rated and took advantage of the scheduled activities the club had to offer and played in her first tournament. She was HOOKED and now plays year round!

Colleen currently is in her second year on the MRPC Executive and in the role of secretary. She coordinates the 3.5+ Challenge court on Thursday and is the Mesa Regal Travel Evil Women's League 3.5 coordinator (cancelled this year due to Covid).

### **What was your first impression of the MR pickleball courts?**

Since I hadn't played pickleball before coming to Mesa Regal, I was hugely impressed with both the courts and the organization. Even still, when I go to other resorts and parks, I hear from others how lucky we are to have specific training for different levels, organized events, and so much involvement by our volunteers.

### **What are the one or two things you enjoy about the MRPC?**

The PEOPLE ARE AMAZING! How did one resort get all the best people? The members just want to have fun and are so kind and respectful to each other. It's a very special pickleball club and resort. This year I have met so many more people playing daily and look forward to good play and the basic camaraderie among us pickling friends.

### **What is the best/worst thing to happen since you started volunteering?**

Best: Have met and gotten to know some amazing people

Worst: No downside yet due to the "best" answer above.

### **What do you wish other people knew about MRPC and volunteering?**

Volunteering is not like added work at all. It expands your sphere of influence and keeps you learning new things and meeting new people. See ya' on the courts!

**THANKS, COLLEEN**, for your service to the club, we are glad you 'landed' at Mesa Regal !!

### **Colleen Janus.....**

In her coordinator role and her competitive mode!! You got to love the smiles you get from Colleen no matter where she is around the courts!!



**Larry Cloud** - Larry lives year round in Arizona.... Mesa Regal in the winter and Prescott Valley in the summer. He is a seasoned pickleball player with 10 years of experience of court time and enjoys playing in recreational and competitive settings. Larry joined the pickleball craze when there were no lessons or youtube videos....we all learned by doing and watching!

Larry has been a valued volunteer at MR over the years and is always willing to ref at our annual tournament and clean those courts!!! He currently coordinates 3.5 Mixed play on Monday, 3.5+ Round Robin on Thursday and the 4.0 Men's Travel League.

**What was your first impression of the MR pickleball courts?**

**Not enough courts!!!** *Yes, we all agree, this is THE MOST COMMON comment we get from people in our MRPClub!!!*

**What are the one or two things you enjoy about the MRPC?**

The people and the level of play.

**What is the best/worst thing to happen since you started volunteering?**

The best thing about volunteering is meeting new people.....worst?

**What do you wish other people knew about MRPC and volunteering?**

That all of us volunteering at MRPC **care!**

**THANKS, LARRY**, for your service to the club, we are glad you 'landed' at Mesa Regal !!



**Larry Cloud**

Whether playing a game or coordinating a round robin event, Larry is a dedicated club volunteer!!



**CRAIG CARLTON** - Craig winters here in Mesa Regal and spends the summer travelling around playing pickleball. If you need info on courts for summer play, check with Craig as he can tell you about Northern California; Bend, Oregon; Boise, Idaho; St. George, Utah; Las Vegas, Nevada and **MORE!!** Craig caught the pickleball bug only 2.5 years ago at Mesa Regal and there is no stopping him.

Craig started volunteering soon after he arrived at Mesa Regal, helping at beginner lessons and has now taken over the role of Beginners Instructor on Monday. Craig also coordinates the Shootout on Saturday and makes sure all the results for Sat/Sun shootouts are posted on the Mesa Regal Pickleball and Friends facebook page.

**What was your first impression of the MR pickleball courts?**

Nice courts and facility but **too few courts!!** *Same comment as Larry!*

**What are the one or two things you enjoy about the MRPC?**

The competition on the courts and the social friendships.



**What is the best/worst thing to happen since you started volunteering?**

The best thing is getting feedback telling me I'm a good teacher....the worst thing is **NO SHOWS** to an organized club activity! *Yes, it is always frustrating when you volunteer your time and people do not honour their committment!*

**What do you wish other people knew about MRPC and volunteering?**

Volunteering does not take a lot of time and it is really helpful for others!

**THANKS, CRAIG**, for your service to the club, we are glad you 'landed' at Mesa Regal !!



**Craig Carlton**

Craig, practicing skills he teaches in Beginners Lessons and getting in some good pickleball play!



**GARY & CINDY ST. JOHN** - Gary & Cindy are full timers at Mesa Regal and the hot summers do not stop them from playing. They get up early and head to the indoor courts at Palmero for 6 a.m.!!! Good for you two!! Obviously, Gary and Cindy have fallen into the Pickleball addiction after only starting last July.

Cindy and Gary volunteer their time on Monday and Wednesdays and coordinate Beginners Social. Beginners Social is such a great activity to meet new people and learn the intricacies of the game in a supportive environment.

**What was your first impression of the MR pickleball courts?**

Mesa Regal outdoor courts are the only courts we played on, other than Palmero which are indoors and temporary nets. So, we think the courts are really good - have nothing to compare them to.

**What are the one or two things you enjoy about the MRPC?**

The PEOPLE....we have a great time playing in all the activities that are offered.

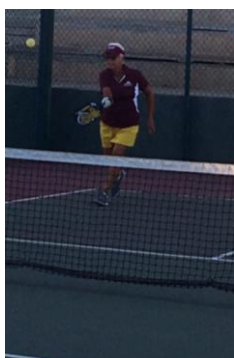
**What is the best/worst thing to happen since you started volunteering?**

The best thing is getting to know so many people and making great friends. Nothing bad!

**What do you wish other people knew about MRPC and volunteering?**

The enjoyment of being with other people and being able to help with functions that wouldn't happen otherwise. Also, we really think we have great leadership!! Any time we have had questions or concerns the club has been there to help, guide and support us. Thank you very much for this.

**THANKS, GARY & CINDY**, for your service to the club, we are glad you 'landed' at Mesa Regal !!



**Cindy & Gary St. John**

Cindy and Gary can be found on Monday and Wednesday nights at the courts running Beginners Social.

What a perfect place for a 'date'!



## PICKLEBALL - THE WORLD'S FASTEST GROWING SPORT

It's no wonder pickleball continues to be the world's fastest-growing sport. Pickleball was designed to allow many people to play and to find success. The rules were set up to level the playing field so that you don't need to be an Olympic athlete to play. The result is lots of people can play promoting more fun, more exercise, and more camaraderie. Read this article about the origins of pickleball and how to use the founders' mindset to improve your own game.

<https://www.picklebilly.com/blogs/picklebilly-posts/the-inception-of-pickleball>

Also, here are some USAPA stats about numbers of players in the U.S. Interesting to note the participation numbers for AGE .... This is no longer a 'Seniors' sport! Also hard to believe there are 2 million players who only play 1-7 times A YEAR!! Click on the link to catch up on some interesting pickleball info!

<https://usapickleball.org/about-us/organizational-docs/pickleball-fact-sheet/>

## TOURNAMENT NEWS

**RED MOUNTAIN ROUND ROBIN** (non-sanctioned) - Feb. 27 & 28

**Congratulations** to all our club members who participated in this tourney. Great play and sportsmanship by all of you. **CONGRATS** to our Medal winners:

**MWD 3.0 Colleen Janus & Jody McGill - GOLD**

**MXD 3.5 Colleen Janus & Clarence Lindblom - BRONZE**



## UPCOMING TOURNAMENTS

**SUN CITY SPRING SLAM** (sanctioned)- March 5-7

**PRESCOTT SPRING FLING** - (sanctioned) April 8-11

**DID YOU KNOW** that you can keep up to date on tournaments in our area by going to: [www.pickleballtournaments.com](http://www.pickleballtournaments.com) **AND** you can follow participant wins & losses by looking up a specific event for the tournament as it is played. It is a fun way to watch our pickleball friends' progress throughout their tournament experience.

**REMEMBER**, if you play in a tournament and have a result you would like to share with the club...email [newsletter@mrpickleballclub.com](mailto:newsletter@mrpickleballclub.com) and I will add that to our newsletter!

Tournaments, currently, are limited.

**That's all for this week folks....keep safe, keep positive, keep smiling, and happy playing!!!!**

